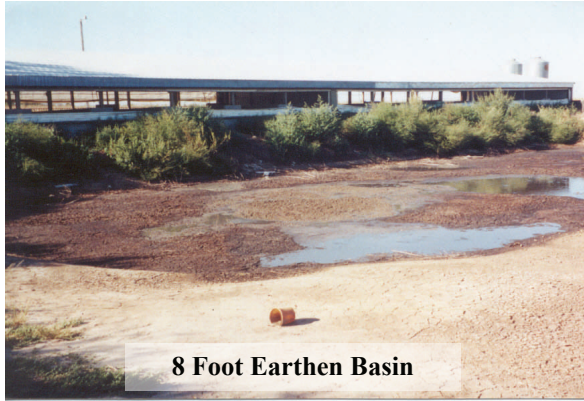


## MID CONTINENT SWINE

Norm Isaacson  
Loomis, NE 68958



8 Foot Earthen Basin



Same Basin 2 years later

## FACILITIES

Pull plug finishing units draining to an eight-foot deep earthen basin.

## PRE-*PITCHARGER* ENVIRONMENT

Norm Isaacson had fought solids buildup in this basin since 1995. By the spring of 2000, when it was filled with solid manure, he was ready to have the basin dredged.

## *PITCHARGER* ENVIRONMENT

Instead of dredging the basin, PitCharger was injected into the manure each spring. Additional PitCharger was added through the pull plugs each month. At the end of two years, the basin was pumped to the bottom and maintenance applications are applied each month to prevent future buildup problems.

## IN CONCLUSION

During the first year Norm observed what he called, “*pretty good results*”. In the fall of the second year he thought the pit was “*pretty well cleaned out*”. This past spring he suggested we take an ‘after’ picture to go with the ‘before’ picture you see above.

A picture is worth a thousand words. Not only does *PitCharger* reduce odors, it is a superb solids-buster as well.



55711 893 Road . Fordyce, NE 68736

Al Larson Distributing

888-231-1002 . Fax (402) 357-2726 . [www.PitCharger.com](http://www.PitCharger.com)